



TECAPRES®

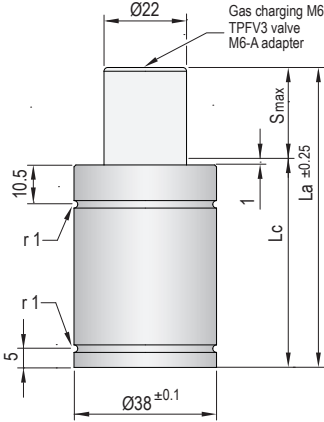
Ø38mm
550daN

TPCT 550

VDI SAFETY



PED
2014/68/EU



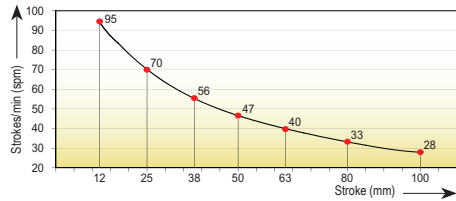
i Pressure medium **Nitrogen (N₂)**

Max. charging pressure	150 Bar
Min. charging pressure	35 Bar
Rod seal area	3,80 cm ²
Operating temperature	0°C - 80°C
Force increase by temperature	0,33 %/°C
Max. stem speed	1,2 m/s
Maintenance kit	Kit CT550



RE-22-32

Maximum strokes / minute (at 20°C)



Code	Smax mm	La mm	Lc mm		Fa daN		F daN		Fc daN		P Bar	V l		Kg	
TPCT 550x12	12	56	44	550 ±5% (20°C)			810		860		145 (20°C)	0,013		0,28	
TPCT 550x25	25	82	57				825		870					0,026	0,34
TPCT 550x38	38	108	70				830		875					0,039	0,39
TPCT 550x50	50	132	82				830		880					0,051	0,43
TPCT 550x63	63	158	95				830		880					0,064	0,48
TPCT 550x80	80	192	112				830		880					0,081	0,55
TPCT 550x100	100	232	132				835		885					0,101	0,64

TPCT

TPSL

STOP CYLINDER

STOP CYLINDER

TPSR

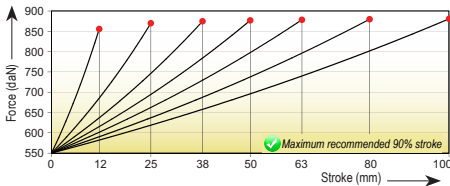
TPSR5

TPNS

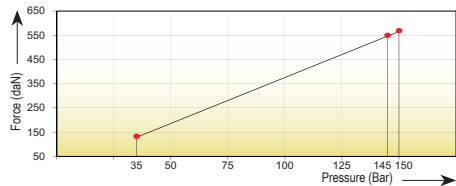
TPHT



Force/stroke ratio



Initial force/charging pressure ratio



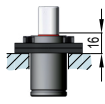
Assembly possibilities



Follow guidelines
Page 287



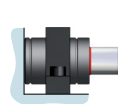
DROP-IN



FS 38-FSC 38



FS 38-FSC 38



FI 38-FI 38/1